



COMBINED LATHE BHP290VF (车钻铣一体机BHP290VF)



加工内外圆表面、圆锥面、平面、车削公制英制螺纹、车钻铣一体功能。适用于小型作坊，店铺维修，研发设计，家庭工业。

特点：1.双杠车床，横向纵向自动走刀。

2.床身表面高频淬火，车床使用无刷电机。

3.安装卡盘护罩、刀架护罩、丝杠护罩、铣头可倾斜正负90度。

Model	BHP290VF	
Max Distance Between Center	顶尖距离	700mm
Max Swing Over Bed	最大回转直径	290mm
Max Swing Over Cross Slide	中拖板最大回转直径	165mm
Bed Of Width	床身宽度	180mm
Spindle Bore	主轴孔径	38mm
Taper Of Spindle	主轴锥度	Mt5
Range Of Spindle Speed	主轴转速范围	50-1800rpm
Slide Feed Speed	中拖板走刀速度	0.07-0.40mm/r
Inch Threads	车削英制螺纹范围	8-56TPI (21kinds)
Metric Threads	车削公制螺纹范围	0.2-3.5mm(18kinds)
Spindle Travel	主轴行程	50mm
Cross Slide Of Travel	中拖板行程	165mm
Tail Stocks Quill Travel	尾座套筒行程	80mm
Taper Of Tail Stocks Quill	尾座锥度	MT3
Main Power	主电机功率	1.1KW
Max Drill Capacity	最大钻孔直径	20mm
Max End Mill Capacity	最大立铣直径	16mm
Max Face Mill Capacity	最大面铣直径	63mm
Taper Of Spindle	主轴锥度	MT3
Max Distance Spindle To Table	主轴到工作台面距离	375mm
Max Distance Spindle To Column	主轴中心到立柱面距离	185mm
Main Motor	主电机功率	600W
Spindle Travel	主轴行程	50mm
Spindle Speed	主轴转速范围	50-2250rpm
T-slot	T型槽宽度	10mm
Overall Net /gross Weight	净重/毛重	280/320kgs
Overall Packing Size	包装尺寸	1400*780*1010mm

Standard accessory : 1.three jaw chuck(三爪卡盘) 2. Drill chuck with arbor (钻夹头) 3.oil tray(油盘) 4. Splash guard (挡削盘) .5.full set metal change gear(金属齿轮) 6.tool box (工具箱)

Optional accessory : 1.four jaw chuck with back plate (四爪卡盘及连接盘) 2. Face plate(花盘) 3. Steady rest(中心架) 4 follow rest(跟刀架) 5. Drill chuck with arbor(钻夹头)

6.welding tool(11pcs) (焊接车刀) 7.carbide turning tool(7pcs) (硬质合金车刀) 8. Live center (活顶尖) 9. Machine stand (机床底座) 10. 2 axis DRO(2轴数显)

11.quickly change tool post (快换刀架) 12 machine vise(平口钳) 13 mill chuck (铣夹头) 14 58pcs clamp kit (精密夹具) 15 keyless collet (自紧夹头)

COMBINED LATHE BHP250V(车钻铣一体机床BHP250V)



Model		BHP250V/F
Max Distance Between Center	顶尖距离	550/750mm
Max Swing Over Bed	最大回转直径	250mm
Max Swing Over Cross Slide	中拖板最大回转直径	165mm
Taper Of Spindle Bore	主轴锥度	MT4
Spindle Bore	主轴孔径	26mm
Bed Of Width	床身宽度	135mm
Range Of Spindle	主轴转速范围	50-2000rpm
Slide Feed Speed	中拖板走刀速度	0.07-0.40mm/r
Inch Threads	切削英制螺纹范围	8-56TPI (21kinds)
Metric Threads	切削公制螺纹范围	0.2-3.5mm(18kinds)
Spindle Travel	主轴行程	50mm
Cross Slide Of Travel	中拖板行程	115mm
Tail Stocks Quill Travel	尾座套筒行程	70mm
Taper Of Tail Stocks Quill	尾座套筒锥度	MT2
Motor	主电机功率	750W
Max Drill Capacity	最大钻孔直径	16mm
Max End Mill Capacity	最大立铣直径	16mm
Max Face Mill Capacity	最大面铣直径	50mm
Taper Of Spindle	主轴锥度	MT2
Vertical Travel	垂直行程	210mm
T-slot	T型槽宽度	10mm
Spindle Travel	主轴行程	50mm
Spindle Speed	主轴转速范围	50-2250rpm
Overall Packing Size	包装尺寸	1400*700*880mm
Overall Net /gross Weight	净重/毛重	200/230kgs

Standard accessory : 1.three jaw chuck(三爪卡盘) 2. Drill chuck with arbor (钻夹头) 3.oil tray (油盘) 4. Splash guard (挡削盘) 5.full set metal change gear (金属齿轮) 6 tool box (工具箱)

Optional accessory : 1.four jaw chuck with back plate (四爪卡盘及连接盘) 2. Face plate (花盘) 3. Steady rest (中心架) 4. follow rest(跟刀架) 5 .Drill chuck with arbor (钻夹头) 6.welding tool(11pcs) (焊接车刀) 7.carbide turning tool(7pcs)(硬质合金车刀) 8 .live center(活顶尖) 9. Machine stand (机床底座) 10. 2 axis DRO (2轴数显) 11. quickly change tool post(快换刀架) 12 .machine vise(平口钳) 13 .mill chuck (铣夹头) 14 .58pcs clamp kit (紧密夹具) 15 .keyless collet (自紧夹头)

COMBINED LATHE BHP260L (车钻铣一体机床BHP260L)

COMBINED LATHE BVB25-3L

一体机床BVB25-3L



BHP260L



BVB25-3L

Model		BHP260L	BVB25-3L
Max Swing Over Bed	最大回转直径	260mm	250mm
Distance Between Center	顶尖距离	700mm	450mm/700mm
Spindle Bore	主轴孔径	26mm	27mm
Spindle Taper	主轴锥度	MT4	MT4
Step Of Spindle Speeds	转速级数	6	4
Spindle Speed	主轴转速范围	115-1620rpm	115-1620rpm
Range Of Inch Threads	切削英制螺纹范围	8-56T.P.I	8-56T.P.I
Range Of Metric Threads	切削公制螺纹范围	0.4-3.5mm	0.2 -3.5mm /r
Travel Of Cross Slide	中拖板行程	140mm	140mm
Taper Of Tailstock Quill	尾座锥度	MT3	MT3
Main Motor	主电机功率	750W	750W
Taper Of Spindle Bore	主轴内孔锥度	MT2	MT3
Spindle Travel	主轴行程	50mm	80mm
Spindle Speed	主轴转速范围	50-2250rpm	400-1600rpm
Max Distance Spindle To Table	主轴到工作台面距离	280mm	125mm
Max Distance Spindle To Column	主轴到立柱面距离	170mm	240mm
Head Tilt	铣头倾斜角度	+ -90 degree	± 9 0 °
Packing Size	包装尺寸	1510*670*1100mm	1510 × 670 × 920mm
Net/gross Weight	净重毛重	220/260kgs	245kg / 265kg

Standard accessory : 1.three jaw chuck(三爪卡盘) 2. Drill chuck with arbor(钻夹头) 3.oil tray(油盘) 4. Splash guard (挡削盘) 5.full set metal change gear (金属齿轮) 6.tool box (工具箱)

Optional accessory : 1.four jaw chuck with back plate(四爪卡盘及连接盘) 2. Face plate (花盘) 3. Steady rest (中心架) 4. follow rest (跟刀架) 5. Drill chuck with arbor (钻夹头) 6.welding tool(11pcs) (焊接车刀) 7.carbide turning tool(7pcs) (硬质合金车刀) 8 live center (活顶尖) 9. Machine stand (机床底座) 10. 2 axis DRO (2轴数显) 11.quickly change tool post (快换刀架) 12 machine vise (平口钳) 13 .mill chuck (铣夹头) 14 58pcs clamp kit (精密夹具) 15 ,keyless collet (自紧夹头)

MINI BENCH LATHE BHC290VF(迷你车床BHC290VF)

加工内外圆表面、圆锥面、平面，车削公制英制螺纹，车钻铣一体功能。
适用于小型作坊，店铺维修，研发设计，家庭工业。
特点：1.双杠车床，横向纵向自动走刀。
2.床身表面高频淬火，车床使用无刷电机。
3.安装卡盘护罩、刀架护罩、丝杠护罩，尾座双重锁快锁跟螺丝锁。

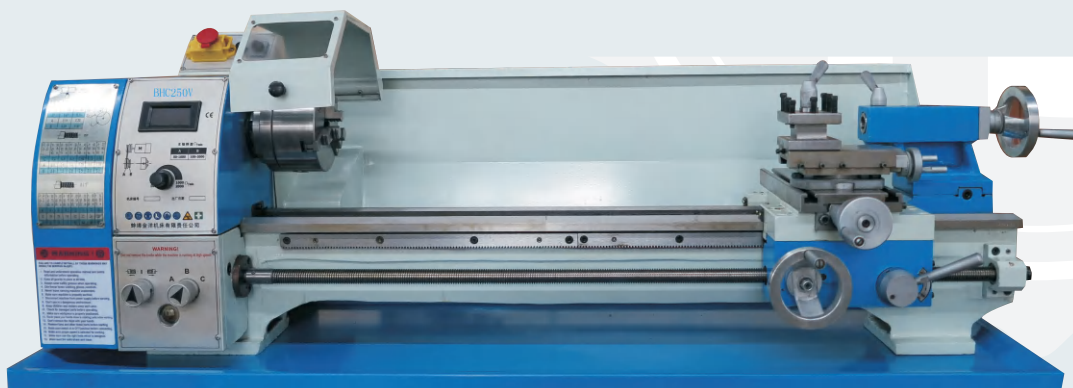


Model		BHC290VF
Max Swing Over Bed	最大回转直径	290mm
Width Bed	床身宽度	180mm
Distance Between Centers	顶尖距离	700mm
Spindle Bore	主轴孔径	38mm
Taper Of Spindle Bore	主轴锥度	MT5
Range Of Spindle Speed	主轴转速范围	50-1800rpm
Range Of Longitudinal Feeds	中拖板走刀速度	0.07-0.40mm/r
Range Of Inch Threads	切削英制螺纹范围	8-56TPI(21)
Range Of Metric Threads	切削公制螺纹范围	0.2-3.5mm(18)
Cross Slide Travel	中拖板行程	165mm
Tailstock Quill Travel	尾座套筒行程	80mm
Taper Of Tailstock Quill	尾座套筒锥度	MT3
Main Power	主电机功率	1.1KW
Net Weight/gross Weight	净重/毛重	220/270kg
Packing Size	包装尺寸	1400*700*680mm

Standard accessory : 1.three jaw chuck(三爪卡盘) 2.oil tray (油盘) 3. Splash guard (挡削盘) 4. full set metal change gear (金属齿轮) 5.tool box (工具箱)

Optional accessory : 1.four jaw chuck with back plate(四爪卡盘及连接盘) 2. Face plate (花盘) 3. Steady rest (中心架) 4 follow rest(跟刀架) 5. Drill chuck with arbor(钻夹头) 6. welding tool(11pcs) (焊接车刀) 7. carbide turning tool(7pcs) (硬质合金车刀) 8. live center (活顶尖) 9. Machine stand (机床底座) 10. 2 axis DRO(2轴数显) 11.quickly change tool post (快换刀架)

MINI BENCH LATHE BHC250V(迷你车床BHC250V)



Note: BHC250V use single rod ,Y axis auto feed . BHC250VF use double rod ,X,Y axis auto feed .

Model		BHC250V/VF
Height Of Centers	中心高	125mm
Distance Between Centers	顶尖距离	550/750 mm
Swing Over Bed	最大回转直径	250mm
Swing Over Cross Slide	中拖板回转直径	145mm
Width Of Bed	床身宽度	135mm
Taper Of Spindle Bore	主轴锥度	MT4
Spindle Bore	主轴孔径	26mm
Number Of Spindle Speeds	转速级数	variable speed
Range Of Spindle Speeds	主轴转速范围	50-2000rpm
Range Of Cross Feeds	横向切削范围	0.026-0.156mm/r
Range Of Longitudinal Feeds	纵向切削范围	0.08-0.48mm/r
Range Of Inch Threads	切削英制螺纹范围	8-56T.P.I
Range Of Metric Threads	切削公制螺纹范围	0.2-3.5mm
Top Slide Travel	主轴行程	50mm
Cross Slide Travel	中拖板行程	115mm
Tailstock Quill Travel	尾座套筒行程	70mm
Taper Of Tailstock Quill	尾座套筒锥度	MT2
Motor	主电机功率	750W
Packing Size	包装尺寸	1150/1350x560x570mm
Net Weight	净重	127/145kgs

Standard accessory : 1.three jaw chuck(三爪卡盘) 2.oil tray (油盘) 3. Splash guard (挡削盘) 4.full set metal change gear (金属齿轮) 5.tool box (工具箱)

Optional accessory : 1.four jaw chuck with back plate(四爪卡盘及连接盘) 2. Face plate (花盘) 3. Steady rest (中心架) 4 follow rest(跟刀架) 5. Drill chuck with arbor(钻夹头) 6.welding tool(11pcs) (焊接车刀) 7.carbide turning tool(7pcs) (硬质合金车刀) 8 .live center (活顶尖) 9. Machine stand (机床底座) 10. 2 axis DRO(2轴数显) 11.quickly change tool post (快换刀架)

MINI BENCH LATHE BHC280(迷你车床BHC280)



Model		BHC280
Distance Between Centers	顶尖距离	700mm
Swing Over Bed	最大回转直径	280mm
Swing Over Cross Slide	中拖板回转直径	150mm
Width Bed	床身宽度	180mm
Taper Of Spindle Bore	主轴锥度	MT4
Spindle Bore	主轴孔径	26mm
Number Of Spindle Speeds	转速级数	6
Range Of Spindle Speed	主轴转速范围	150-2000RPM
Range Of Longitudinal Feeds	中拖板走刀速度	0.07-0.20mm/r
Range Of Inch Threads	切削英制螺纹范围	8-56TPI
Range Of Metric Threads	切削公制螺纹范围	0.2-3.5mm
Tape Slide Travel	主轴行程	50mm
Cross Slide Travel	中拖板行程	165mm
Tailstock Quill Travel	尾座套筒行程	80mm
Taper Of Tailstock Quill	尾座套筒锥度	MT2
Motor	电机功率	750W
Packing Size	包装尺寸	1400*700*680mm
Net Weight/gross Weight	净重/毛重	205/265kg

Standard accessory : 1. three jaw chuck(三爪卡盘) 2. oil tray (油盘) 3. Splash guard (挡削盘) 4.full set metal change gear (金属齿轮) 5.tool box (工具箱)

Optional accessory : 1.four jaw chuck with back plate(四爪卡盘及连接盘) 2. Face plate (花盘) 3. Steady rest (中心架) 4. follow rest(跟刀架) 5. Drill chuck with arbor(钻夹头) 6. welding tool(11pcs) (焊接车刀) 7. carbide turning tool(7pcs) (硬质合金车刀) 8. live center (活顶尖) 9. Machine stand (机床底座) 10. 2 axis DRO(2轴数显) 11.quickly change tool post (快换刀架)

MINI LATHE BHC260F (迷你车床BHC260F)



Two rod, horizontal & longitudinal axis auto feed

Model		BHC260F
Distance Between Center	顶尖距离	700mm
Swing Over Bed	最大回转直径	250mm
Width Of Bed	床身宽度	125mm
Taper Of Spindle Bore	主轴锥度	MT4
Spindle Bore	主轴孔径	26mm
Step Of Spindle Speeds	转速级数	6
Range Of Spindle Speeds	主轴转速范围	115-1620rpm
Range Of Inch Threads	切削英制螺纹范围	8-56TPI
Range Of Metric Threads	车削公制螺纹范围	0.2-3.5mm
Travel Of Cross Slide	中拖板行程	115mm
Taper Of Tailstock Quill	尾座套筒锥度	MT2
Motor	主电机功率	750W
Packing Size	包装尺寸	1510*570*580
Net/gross Weight	净重/毛重	175/200kgs

Standard accessory : 1.three jaw chuck(三爪卡盘) 2.oil tray (油盘) 3. Splash guard (挡削盘) 4.full set metal change gear (金属齿轮) 5.tool box (工具箱)

Optional accessory : 1.four jaw chuck with back plate(四爪卡盘及连接盘) 2.Face plate (花盘) 3.Steady rest (中心架) 4.follow rest(跟刀架) 5.Drill chuck with arbor(钻夹头) 6.welding tool(11pcs) (焊接车刀) 7.carbide turning tool(7pcs) (硬质合金车刀) 8 .live center (活顶尖) 9. Machine stand (机床底座) 10. 2 axis DRO(2轴数显) 11.quickly change tool post (快换刀架)

MINI BENCH LATHE BVB25L(迷你车床BVB25L)

MINI BENCH LATHE BV20L(迷你车床BV20L)



BVB25L



BV20L

Model		BVB25L
Distance Between Center	顶尖距离	450/700mm
Swing Over Bed	最大回转直径	250mm
Width Of Bed	床身宽度	125mm
Taper Of Spindle Bore	主轴锥度	MT4
Spindle Bore	主轴孔径	27mm
Step Of Spindle Speeds	转速级数	6
Range Of Spindle Speeds	主轴转速范围	115-1620rpm
Range Of Inch Threads	切削英制螺纹范围	8-56TPI
Range Of Metric Threads	车削公制螺纹范围	0.2-3.5mm
Travel Of Cross Slide	中拖板行程	140mm
Taper Of Tailstock Quill	尾座套筒锥度	MT3
Motor	主电机功率	750KW
Packing Size	包装尺寸	1260/1510*570*580mm
Net Weight	净重	151/171kgs
Model		BV20L
Distance Between Centers	顶尖距离	350/520mm
Swing Over Bed	床身回转直径	220mm
Swing Over Cross Slide	中拖板回转直径	115mm
Taper Of Spindle Bore	主轴锥度	MT3
Spindle Bore	主轴孔径	20mm
Step Of Spindle Speeds	转速级数	6
Range Of Spindle Speeds	主轴转速范围	140-1710rpm
Range Of Longitudinal Feeds	纵向进给量	0.05-0.15mm/r
Range Of Metric Threads	车削公制螺纹范围	0.4-3mm
Range Of Inch Threads	车削英制螺纹范围	8-32T.P.I
Taper Of Tail Stock Quill	尾座套筒锥度	MT2
Main Motor	主电机功率	0.75KW
Packing Size	包装尺寸	1050/1200*500*550mm
Net Weight	净重	125/145kg

Standard accessory : 1.three jaw chuck(三爪卡盘)2.oil tray (油盘) 3. Splash guard (挡削盘) 4.full set metal change gear (金属齿轮) 5.tool box (工具箱)

Optional accessory : 1.four jaw chuck with back plate(四爪卡盘及连接盘) 2. Face plate (花盘) 3. Steady rest (中心架) 4. follow rest(跟刀架) 5. Drill chuck with arbor(钻夹头) 6.welding tool(11pcs) (焊接车刀) 7.carbide turning tool(7pcs) (硬质合金车刀) 8.live center (活顶尖) 9. Machine stand (机床底座) 10. 2 axis DRO(2轴数显) 11.quickly change tool post (快换刀架)

MINI BENCH LATHE CJM320B(迷你车床CJM320B)

MINI BENCH LATHE CJM250(迷你车床CJM250)



CJM320B



CJM250

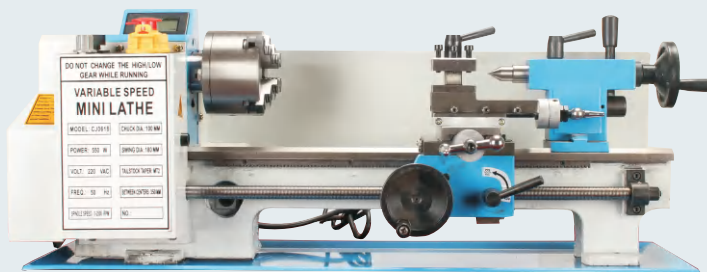
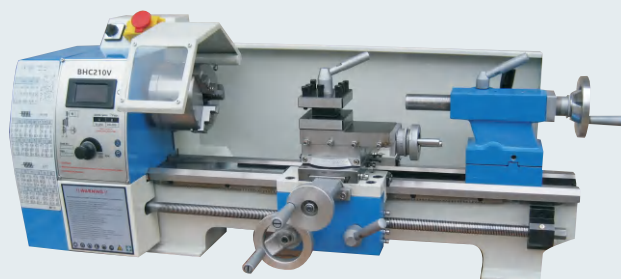
Feature: Threading without change gear .Bed surface frequency hardened .

Model		CJM320B
Max Swing Bed	最大回转直径	320mm
Max Swing Slide Over Bed	中拖板回转直径	200mm
Spindle Bore	主轴孔径	38mm
Spindle Taper	主轴锥度	MT5
Spindle Speed	主轴转速范围	60-1600rpm
Step Of Spindle Speed	转速级数	12
Cross Feed	横向进给量	0.045-0.6mm/r
Longitudinal Feed	纵向进给量	0.1-1.4mm/r
Max Range Tailstocks Quill	尾座套筒行程	80mm
Taper Of Tailstocks Quill	尾座套筒锥度	MT3
Motor	主电机功率	750W
GW/NW	毛重/净重	290/260KGS
Packing Size	包装尺寸	1470x770x1470mm
Model		CJM250
Max Swing Bed	最大回转直径	250mm
Max Swing Over Cross Slide	中拖板回转直径	150mm
Distance Between Center	顶尖距离	500mm
Spindle Bore	主轴孔径	26mm
Spindle Taper	主轴锥度	MT4
Spindle Speed Range	主轴转速范围	60-1600rpm
Step Of Spindle Speed	转速级数	12
Longitudinal Feed	纵向进给量	0.03-0.275mm/r
Cross Feed	横向进给量	0.015-0.137mm/r
Metric Threads	车削公制螺纹范围	0.25-2.5mm
Motor Power	主电机功率	750W
Gw/nw	毛重/净重	185/165kgs
Packing Size	包装尺寸	1200*620*600mm

Standard accessory : 1.three jaw chuck(三爪卡盘) 2.oil tray(油盘) 3. Splash guard (挡削盘) 4.metric metal change gear (公制挂轮) 5.tool box (工具箱)
 Optional accessory : 1.four jaw chuck with back plate(四爪卡盘及连接盘) 2. Face plate(花盘) 3. Steady rest(中心架) 4 follow rest (跟刀架) 5. Drill chuck with arbor (钻夹头) 6.welding tool(11pcs)(焊接车刀) 7.carbide turning tool(7pcs)(硬质合金车刀) 8.live center(活顶尖) 9. Machine stand(机床底座) 10. 2 axis DRO(2轴数显) 11.quickly change tool post(快换刀架) 12. Inch change gear (英制挂轮)

MINI BENCH LATHE BHC210V(迷你车床BHC210V)

MINI LATHE CQ0618A (迷你车床CQ0618A)



Model		BHC210V	BHC180V
Max Swing Over Bed	最大回转直径	210mm	180mm
Width Of Bed	床身宽度	100	100
Distance Between Centers	顶尖距离	400mm	300mm
Spindle Bore	主轴孔径	21mm	21mm
Taper Of Spindle Bore	主轴锥度	MT3	MT3
Range Of Spindle Speeds	主轴转范围	50-2500rpm	50-2500rpm
Taper Of Tailstock Quill	尾座套筒锥度	MT2	MT2
Metric Threads	车削公制螺纹范围	0.5-3mm	0.5-3mm
Inch Threads	车削英制螺纹范围	10-44T.PI	10-44T.PI
Max Travel Of Cross Slide	中拖板行程	75mm	75mm
Travel Of Tailstock Sleeve	尾座套筒行程	60mm	60mm
Motor Power	主电机功率	650W	650W
GW/NW	毛重/净重	75/68KGS	70/60KGS
Package Size(L*w*h)	包装尺寸	900X480X480mm 780*480*420mm	900X480X480mm 780*480*420mm
Model		CQ0618A	
Distance Between Centers	顶尖距离	350mm	
Swing Oved Bed	最大回转直径	180mm	
Spindle Taper	主轴锥度	MT3	
Spindle Bore	主轴孔径	32mm	
Chuck Diameter	卡盘直径	100mm	
Tool Slide Travel	中拖板行程	35mm	
Taper Of Tailstock Quill	尾座套筒锥度	MT2	
Range Of Metric Threads	车削公制螺纹范围	0.5-2.5mm	
Range Of Inch Threads	车削英制螺纹范围	12-52TPL(optional)	
Cross Slide Travel	中拖板行程	65mm	
Spindle Speed	主轴转速范围	100-2000rpm	
Motor	主电机功率	550W	
Net Weight	净重	45kgs	
Gross Weight	毛重	50KGS	
Packing Size	包装尺寸	810*305*370mm	

Standard accessory : 1.three jaw chuck(三爪卡盘) 2.oil tray (油盘) 3. Splash guard (挡削盘) 4.full set metal change gear (金属齿轮) 5.tool box (工具箱)

Optional accessory : 1.four jaw chuck with back plate(四爪卡盘及连接盘) 2. Face plate (花盘) 3. Steady rest (中心架) 4 follow rest(跟刀架) 5. Drill chuck with arbor(钻夹头) 6. welding tool(11pcs) (焊接车刀) 7. carbide turning tool(7pcs) (硬质合金车刀) 8. live center (活顶尖) 9. Machine stand(机床底座) 10. 2 axis DRO(2轴数显) 11.quickly change tool post (快换刀架)

SMALL DRILL MILL WMD16V(小型钻铣床WMD16V)



WMD16V

WMD25V



WMD25V

Model		WMD16V	WMD25V
Max. Drilling Capacity	最大钻孔直径	dia 16mm	25mm
Max. Face Milling Capacity	最大面铣直径	dia 52mm	63mm
Max. End Milling Capacity	最大立铣直径	dia 16mm	20mm
Working Table Size	工作台尺寸	500*140mm	500*180/700*1800mm
T-slot Size	T槽宽度	10mm	12mm
X-axis Travel	X轴行程	220mm	280mm
Y-axis Travel	Y轴行程	160mm	175mm
Z-axis Travel	Z轴行程	210mm	380mm
Taper Of Spindle Bore	主轴锥度	MT2	MT3
Spindle Travel	主轴行程	50mm	50mm
Range Of Spindle Speeds	主轴转速范围	50-2250rpm	50-2500rpm
Headstock Tilt Left & Right	铣头倾斜范围	±90 degree	± 90 degree
Motor Power	主电机功率	600W	1KW
NW/GW	净重/毛重	85/100Kg	110Kg/130Kg
Package size (L×W×H)	包装尺寸	520*510*840mm	670*550*860mm

Standard accessory : 1. drill chuck with arbor 钻夹头, tool box 工具箱

Optional accessory : 1.machine vise 平口钳 2. Mill chuck 铣夹头 3. 58pcs clamp kit 精密夹具 4. Keyless collet 自紧夹头 5. 2 axis DRO 2轴数显

SMALL DRILL MILL ZX32 (小型钻铣床ZX32)

SMALL DRILL MILL ZAY7045FG(小型钻铣床ZAY7045FG)



Model		ZX32G
Max Drill Capacity	最大钻孔直径	30mm
Max End Mill Capacity	最大立铣直径	16mm
Max Face Mill Capacity	最大面铣直径	63mm
Work Table Size	工作台尺寸	700X180mm
Spindle Taper	主轴锥度	MT3
Y- Axis Travel	Y轴行程	200mm
X -axis Travel	X轴行程	320mm
Z- Axis Travel	Z轴行程	310mm
Spindle Travel	主轴行程	75mm
T-slot Width	T型槽宽度	12mm
Spindle Speed	主轴转速范围	95-1420rpm
Base Size	底部尺寸	550X340mm
Main Motor	主电机功率	750W
Nw/gw	净重/毛重	170/200kgs



Model		ZAY7045FG
Max.drilling Capacity	最大钻孔直径	45mm
Max.face Milling Capacity	最大面铣直径	63mm
Max. End Milling Capacity	最大立铣直径	20mm
Taper Of Spindle Bore	主轴锥孔	MT4 or R8
Max Distance Spindle-table	主轴到工作台面距离	450mm
Mini Distance Spindle Axis-column Surface	主轴中心到立柱表面距离	260mm
Spindle Travel	主轴行程	130mm
Head Rotation	铣头倾斜范围	± 90 degree
Working Table Size	工作台尺寸	800*240mm
Table Travel (before And Back)	纵向行程	175mm
Table Travel (left And Right)	横向行程	500mm
Spindle Speed Step	转速级数	6
Motor Power	主电机功率	1.5KW
Nw/gw	净重/毛重	320/370kg
Package Size	包装尺寸	670*550*860mm

Standard accessory : 1. drill chuck with arbor 钻夹头2 tool box 工具箱

Optional accessory : 1.machine vise 平口钳 2. Mill chuck 铣夹头 3. 58pcs clamp kit 精密夹具 4. Keyless collet 自紧夹头 5.2 axis DRO 2轴数显



中心架
Steady rest



跟刀架
follow rest



花盘
face plate



硬质车刀
carbide turning tool



焊接车刀
welding
turning
tool



欧式快换刀架
Europe QCTP



精密夹具
clamp kit



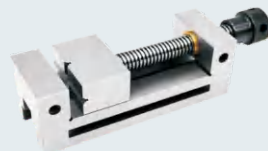
铣夹头
mill chuck



活顶尖
live center



数显
Digital readout



平口钳
machine vise



工作柜
stand