



NANJING ROLL MACHINE TOOL CO. , LTD

MANUAL LATHE CATALOG (2020)

C06230A/30B

台式车床 BENCH LATHE



标准附件 /Standard accessories

- 变径套
- 顶尖
- 三爪卡盘
- 变换齿轮
- 机床工具箱 (含一套工具)
- Reduction sleeves MT5/3#
- Centers
- Three jaw chuck
- Changing gears
- Tool box and tools 1 set

特殊附件 /Special accessories

- 四爪卡盘
- 花盘
- 中心架
- 跟刀架
- 活顶尖
- 床座
- 工作灯
- 脚刹
- 冷却
- Four jaw chuck
- Face plate
- Steady rest
- Follow rest
- Live center
- Bed base
- Work light
- Foot brake
- Coolant

特点 / Features

- ◆ 床身导轨表面经淬火和精密磨削
- ◆ 主轴支撑采用精密圆锥滚子轴承
- ◆ 主轴齿轮采用优质并经表面淬火和磨削加工
- ◆ 可卸的马鞍提供了较大的加工范围
- ◆ 较方便和易操作的变速机构
- ◆ 操作方便的走刀箱有多种进刀量供选择并能车各种螺纹
- ◆ 有床脚和无床脚两种型号可供选择
- ◆ 备有圆弧面外观造型可供选择
- ◆ Precision ground and hardened bed ways
- ◆ The spindle is supported with precision roller bearings
- ◆ Head stock gears are made of high quality steel ground and hardened
- ◆ Easy operating speed change levers
- ◆ Removable gap is provided for larger diameter work
- ◆ Easy operating gear box has various feed and thread cutting function
- ◆ With or without foot stand for optional
- ◆ Right angle appearance or circular appearance to optional

机床规格及技术参数 / Specification

技术参数	Specification	C06230A	C06230A 变频 (Variable-speed)	C06230B
床身上最大工件回转直径	Swing over bed	300mm (12 ")		300mm (12 ")
托板上最大工件回转直径	Swing over cross slide	178mm (7 ")		178mm (7 ")
马鞍上最大工件回转直径	Swing in gap diameter	430mm (17 ")		430mm (17 ")
最大工件长度	Length of work piece	914mm (36 ")		914mm (36 ")
最大车削长度	Length of turning	760mm (30 ")		760mm (30 ")
主轴通孔直径	Spindle bore	38mm (1-1/2 ")		38mm (1-1/2 ")
主轴锥孔锥度	Taper of spindle bore	M. T. No. 5		M. T. No. 5
主轴转速范围	Range of spindle speed (9steps)	60-1500r/min	60-2000r/min	60-2000r/min
尾架套筒锥孔锥度	Quill Taper	M. T. No. 3		M. T. No. 3
车削公制螺纹螺距 (26 种)	Range of metric threads to be cut (29kinds)	0.4-7mm		0.4-7mm
车削英制螺纹螺距 (34 种)	Range of inch threads to be cut (40kinds)	4-56T.P. I		4-56T.P. I
进给丝杆的螺纹螺距	Pitches of three feed lead screws	3mm (8T.P.L)		3mm (8T.P.L)
主轴每转刀架纵向进给量 (32 种)	Longitudinal feed per revolution of spindle (40kinds)	0.052-1.392 (0.002-0.0548 ")		0.052-1.392 (0.002-0.0548 ")
主轴每转刀架横向进给量 (32 种)	Cross feed per revolution of spindle (40kinds)	0.014-0.38 (0.0007-0.0187 ")		0.014-0.38 (0.0007-0.0187 ")
大拖板最大纵向行程 Max	Max. Longitudinal travel of saddle	800mm (31-1/2 ")		800mm (31-1/2 ")
中拖板最大横向行程 Max	Max. travel of cross slide	160mm (5-5/16 ")		160mm (5-5/16 ")
小拖板最大横向行程	Max. travel of top slide	85mm (3-1/4 ")		85mm (3-1/4 ")
尾架套筒的最大移动量	Quill travel	95mm (3-3/4 ")		95mm (3-3/4 ")
电机功率	Main motor power	1.1kW (1.5HP)		1.1kW (1.5HP)
电机频率	Motor frequency	60Hz or 50Hz		60Hz or 50Hz
外形尺寸 (长×宽×高)	Overall dimensions (L×W×H)	160×73×127cm		160×73×127cm
净重	Net weight	460kg		460kg
包装箱尺寸 (长×宽×高)	Packing dimensions (L×W×H)	168×75×142cm		168×75×142cm

C0632A-TOP/36A-TOP

台式车床 BENCH LATHE



标准附件 /Standard accessories

- 变径套
- 顶尖
- 三爪卡盘
- 变换齿轮
- 机床工具箱 (含一套工具)
- Reduction sleeves MT5/3#
- Centers
- Three jaw chuck
- Changing gears
- Tool box and tools 1 set

特殊附件 /Special accessories

- 四爪卡盘
- 花盘
- 中心架
- 跟刀架
- 活顶尖
- 床座
- 工作灯
- 脚刹
- Four jaw chuck
- Face plate
- Steady rest
- Follow rest
- Live center
- Bed base
- Work light
- Foot brake

· 冷却

· Coolant

特点 / Features

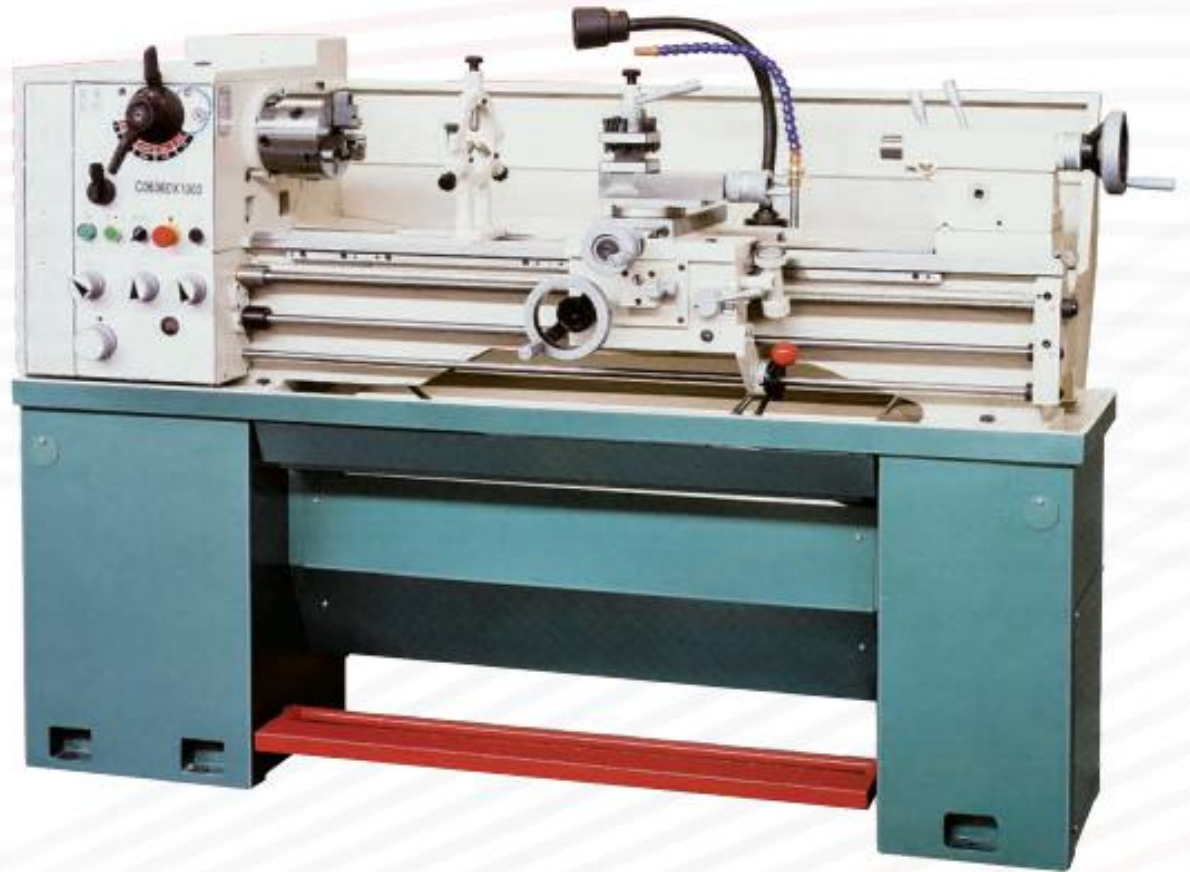
- ◆ 床身导轨表面经淬火和精密磨削
- ◆ 主轴支撑采用精密圆锥滚子轴承
- ◆ 主轴齿轮采用优质钢并经表面淬火和磨削加工
- ◆ 可卸的马鞍提供了较大的加工范围
- ◆ 较方便和易操作的变速机构
- ◆ 操作方便的走刀箱有多种进刀量供选择并能车削各种螺纹
- ◆ 有床脚和无床脚两种型号可供选择
- ◆ Precision ground hardened bedways
- ◆ The spindle is supported with precision roller bearings
- ◆ Headstock gears are made of high quality steel, ground and hardened
- ◆ Removable gap is provided for larger diameter work
- ◆ Easy operation speed change levers
- ◆ Easy operating gear box has various feeds and thread cutting function
- ◆ Two types for selection: with foot stand in reserve or without foot stand

机床规格及技术参数 / Specification

型号	MODELS	C0632A	C0636A	C0636V
床身上最大工件回转直径	Swing over bed	330mm(13 ")	360mm(14 ")	358mm(14 ")
马鞍上最大工件回转直径	Swing over cross slide	198mm(7-25/32 ")	224mm(8-13/16 ")	223mm(8-25/32 ")
凹口上最大加工物直径	Swing in gap diameter	476mm(18-3/4 ")	502mm(19-3/4 ")	502mm(19-3/4 ")
凹口上最大加工物长度	Swing in length	210mm(8-1/4 ")	210mm(8-1/4 ")	210mm(8-1/4 ")
中心高度	Center height	166mm(6-1/2 ")	179mm(7 ")	179mm(7 ")
两顶心间最大距离	Admits between	1000mm(40 ")	1000mm(40 ")	1000mm(40 ")
床面宽度	Bed width	187mm(7-3/8 ")	187mm(7-3/8 ")	187mm(7-3/8 ")
床面长度	Bed length	1655mm(65-1/8 ")	1655mm(65-1/8 ")	1655mm(65-1/8 ")
床面高度	Bed height	290mm (11- 13/32 ")	290mm (11- 13/32 ")	290mm (11- 13/32 ")
主轴孔径	Spindle bore	38mm(1-1/2 ")	38mm(1-1/2 ")	38mm(1-1/2 ")
主轴端部	Spindle nose	D1-4 "	D1-4 "	D1-4 "
主轴端部锥度	Taper in nose	MT NO.5	MT NO.5	MT NO.5
主轴速度变换数	Speeds number	8	8	8
主轴转速范围	Range of spindle speed	70-2000 r/min	70-2000 r/min	20 ~ 450 or 135 ~ 3000r.p.m
滑板宽度	Cross slide width	130mm (5-3/32 ")	130mm (5-3/32 ")	130mm (5-3/32 ")
滑板行程	Cross slide travel	170mm(6-11/16 ")	170mm(6-11/16 ")	160mm (6-5/16 ")
复式刀架滑板宽度	Compound rest width	80mm(3-1/8 ")	80mm(3-1/8 ")	80mm(3-1/8 ")
复式刀架滑板行程	Compound rest travel	95mm(3-9/16 ")	95mm(3-9/16 ")	95mm(3-9/16 ")
床鞍导杆外径	Lead screw diameter	22mm(7/8 ")	22mm(7/8 ")	22mm(7/8 ")
床鞍导杆螺距	Lead screw thread	8T.P.I. or 3mm	8T.P.I. or 3mm	8T.P.I. or 3mm
进给杆外径	Feed rod diameter	19mm(3/4 ")	19mm(3/4 ")	19mm(3/4 ")
加工刀具端面最大尺寸	Cutting tool max section	16mm×16mm(5/8 " ×5/8 ")	16mm×16mm(5/8 " ×5/8 ")	16mm×16mm(5/8 " ×5/8 ")
英制螺距	Threads imperial pitches	34 Nos.4-56 T.P.I	34 Nos.4-56 T.P.I	34 Nos.4-56 T.P.I
公制螺距	Threads metric pitches	26 Nos.0.4-7 M.P	26 Nos.0.4-7 M.P	26 Nos.0.4-7 M.P
纵向进给英制	Longitudinal feeds imperial	32 Nos.0.002-0.548 " /Rev	32 Nos.0.002-0.548 " /Rev	32 Nos.0.002-0.548 " /Rev
纵向进给公制	Longitudinal feeds metric	32 Nos.0.052-0.392mm/Rev	32 Nos.0.052-0.392mm/Rev	32 Nos.0.052-0.392mm/Rev
横向进给英制	Cross feeds imperial	32 Nos.0.007-0.0187 " /Rev	32 Nos.0.007-0.0187 " /Rev	32 Nos.0.007-0.0187 " /Rev
横向进给公制	Cross feeds metric	32 Nos.0.014-0.380mm/Rev	32 Nos.0.014-0.380mm/Rev	32 Nos.0.014-0.380mm/Rev
套筒直径	Quill diameter	32mm(1-1/4 ")	32mm(1-1/4 ")	32mm(1-1/4 ")
套筒行程	Quill travel	100mm(3-15/16 ")	100mm(3-15/16 ")	100mm(3-15/16 ")
套筒锥度	Quill taper	MT NO.3	MT NO.3	MT NO.3
主电机	Main motor	1.5kW(2HP)	1.5kW(2HP)	1.5kW(2HP)

C0632D / C0636D

台式车床 BENCH LATHE



标准附件 /Standard accessories

- 变径套
- 顶尖
- 三爪卡盘
- 变换齿轮
- 机床工具箱 (含一套工具)
- Reduction sleeves MT5/3#
- Centers
- Three jaw chuck
- Changing gears
- Tool box and tools 1 set

特殊附件 /Special accessories

- 四爪卡盘
- 花盘
- 中心架
- 跟刀架
- 活顶尖
- 床座
- 工作灯
- 脚刹
- 冷却
- Four jaw chuck
- Face plate
- Steady rest
- Follow rest
- Live center
- Bed base
- Work light
- Foot brake
- Coolant

特点 / Features

- ◆ 实现了 " 零 " 装箱挂轮
- ◆ 螺纹种类齐全, 不仅能车削常用的公制螺纹和英制螺纹, 还能车削常用的径节制、模数制螺纹
- ◆ 横向最小进给量 0.01mm/rev, 纵向最小进给量 0.046mm/rev
- ◆ No change gear in tool box.
- ◆ The thread category complete, not only cutting metric thread and imperial thread, but also cutting diametral thread and module thread.
- ◆ Minimum Cross feed 0.01mm/rev, Minimum Longitudinal feed 0.046mm/rev

机床规格及技术参数 / Specification

型 号	MODELS	C0632D	C0636D
床身上最大工件回转直径	Swing over bed	330mm(13 ")	360mm(14 ")
中拖板上最大工件回转直径	Swing over cross slide	198mm(7-25/32 ")	224mm(8-13/16 ")
马鞍槽内最大工件回转直径	Swing in gap diameter	476mm(18-3/4 ")	502mm(19-3/4 ")
马鞍宽度	length in gap	210mm(8-1/4 ")	
主轴中心高	Center height	166mm(6-1/2 ")	179mm(7 ")
最大顶尖距	Admits between	1000mm(40 ")	
主轴通孔直径	Spindle bore	38mm(1-1/2 ") or 40mm(1-9/16 ")	
主轴头部型式	Spindle nose	D1-4 or D1-5	
主轴内锥	Taper in nose	No5 morse	
主轴转速级数	Speeds number	8	
主轴转速范围	Speeds range	70-2000r/min	
中拖板行程	Cross slide travel	170mm(6-11/16 ")	
小拖板行程	Compound rest travel	95mm(3-9/16 ")	
大丝杆螺距	Lead screw thread	8T.P.I. or 3mm pitch	
进给杆直径	Feed rod diameter	19mm(3/4 ")	
最大刀具截面	Cutting tool max section	16mm×16mm(5/8 " ×5/8 ")	
英制螺纹范围	Threads imperial pitches	42 Nos. 4-112T.P.I	
公制螺纹范围	Threads metric pitches	44 Nos. 0.1-7mm	
径节制螺纹范围	Threads diametral pitches	25 Nos. 16-112DP	
模数制螺纹范围	Threads module pitches	34 Nos. 0.1-1.75MP	
纵向进给量范围 (英制)	Longitudinal feeds imperial	24 Nos. 0.00168-0.1175 " /rev	
纵向进给量范围 (公制)	Longitudinal feeds metric	24 Nos. 0.046-3.249 mm/rev	
横向进给量范围 (英制)	Cross feeds imperial	32 Nos. 0.00046-0.03231 " /rev	
横向进给量范围 (公制)	Cross feeds metric	24 Nos. 0.01-0.703 mm/rev	
尾架套筒直径	Quill diameter	32mm(1-1/4 ") or 42mm(1-21/32 ")	
尾架套筒行程	Quill travel	100mm(3-15/16 ")	
尾架套筒内锥	Quill taper	No3 morse	
主电机功率	Main motor power	1.5kW (2HP)	
冷却泵功率	Coolant pump power	40W (1/16HP)	
包装箱尺寸(cm)	Packing size	93cm×76cm×153cm	
净重 / 毛重 (kg)	NG/GW	540/645 kg	

C6236/36V

卧式车床 ENGINE LATHE



标准附件 /Standard accessories

- 变径套
- 顶尖
- 三爪卡盘
- 变换齿轮
- 机床工具箱 (含一套工具)
- Reduction sleeves MT5/3#
- Centers
- Three jaw chuck
- Changing gears
- Tool box and tools 1 set

特殊附件 /Special accessories

- 四爪卡盘
- 花盘
- 中心架
- 跟刀架
- 活顶尖
- 床座
- 工作灯
- 脚刹
- 冷却
- Four jaw chuck
- Face plate
- Steady rest
- Follow rest
- Live center
- Bed base
- Work light
- Foot brake
- Coolant

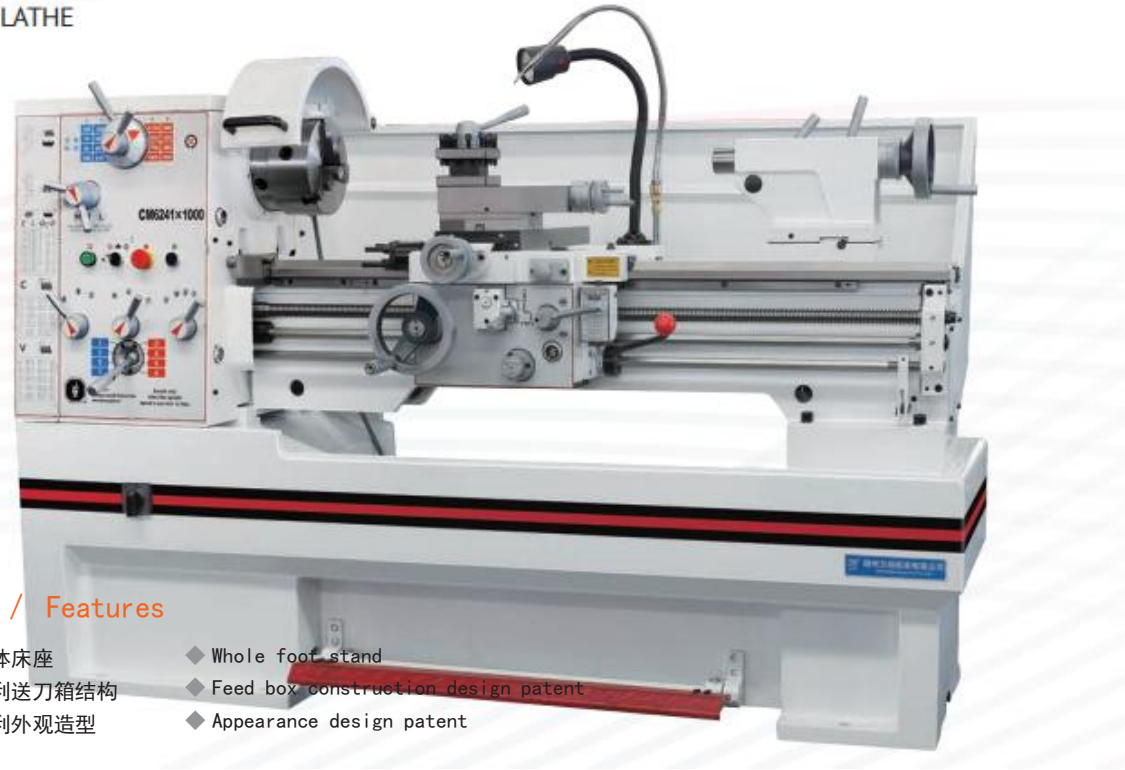
特点 / Features

- ◆ 床身导轨表面经淬火和精密磨削
- ◆ 主轴支撑采用精密圆锥滚子轴承
- ◆ 主轴齿轮采用优质并经表面淬火和磨削加工
- ◆ 可卸的马鞍提供了较大的加工范围
- ◆ 较方便和易操作的变速机构
- ◆ 操作方便的走刀箱有多种进刀量供选择并能车各种螺纹
- ◆ Precision ground and hardened bed ways
- ◆ The spindle is supported with precision roller bearings
- ◆ Head stock gears are made of high quality steel ground and hardened
- ◆ Easy operating speed change levers
- ◆ Removable gap is provided for larger diameter work
- ◆ Easy operating gear box has various feed and thread cutting function

技术参数	Specification	型号 Model	
		C6236	C6236V
加工范围 Capacity			
床身上最大工件回转直径	Swing over bed	356mm(14")	
拖板上最大工件回转直径	Swing over cross slide	220mm(8-5/8")	
马鞍槽内最大回转直径	Swing in gap diameter	506mm(20")	
花盘前马鞍有效长度	Valid length of gap	145mm(5-11/16")	
两顶尖中心距	Admits between	1000mm(40")	
床身宽度	Width of bed	206mm(8")	
主轴箱 Headstock			
主轴端部	Spindle nose	D1-4	
主轴通孔直径	Spindle bore	38mm(1-1/2")	
主轴内孔锥度	Taper of spindle bore	MT No.5	
主轴转速范围	Range of spindle speed	16 changes 45~1800r/min	30~550r.p.m 155~3000r.p.m
进给及螺纹 Feed and threads			
小拖板行程	Compound rest travel	95mm(3-3/4")	
中拖板行程	Cross slide travel	180mm(7")	
刀具最大截面	Max. section of tool	16mm×16mm(5/8"×5/8")	
大丝杠螺距	Lead screw thread	8T.P.I. or 4mm	
纵向进给	Longitudinal feeds range	0.0012"~0.0294"/rev (Inch lathe) or 0.043~0.653mm/rev (Metric lathe)	
横向进给	Cross feeds range	0.0004"~0.01"/rev (Inch lathe) or 0.027~0.413mm/rev (Metric lathe)	
公制螺纹范围	Threads metric pitches	0.45~7.5mm (Inch lathe) or 0.4~7mm (Metric lathe)	
英制螺纹范围	Threads inch pitches	4~112T.P.I. (Inch lathe) or 4~56T.P.I. (Metric lathe)	
尾座 Tailstock			
尾座套筒直径	Quill diameter	45mm(1-3/4")	
尾座套筒行程	Quill travel	120mm(4-3/4")	
尾座套筒内孔锥度	Quill taper	MT No.3	
电机 Motor			
主电机 (双速)	Main motor power (double speeds)	1.5/2.4kW(2/3HP)	
冷却泵	Coolant pump power	0.04kW	
外形尺寸及重量 Dimension and weight			
外型尺寸(长×宽×高)	Overall dimension (L×W×H)	182×74×125cm	
包装箱尺寸(长×宽×高)	Packing size (L×W×H)	193×76×158cm	193×92×159cm
净重	Net weight	730kg	750kg
毛重	Gross weight	860kg	880kg

CM6241/6241V

卧式车床 ENGINE LATHE



特点 / Features

- ◆ 整体床座 ◆ Whole foot stand
- ◆ 专利送刀箱结构 ◆ Feed box construction design patent
- ◆ 专利外观造型 ◆ Appearance design patent

标准附件 /Standard accessories

- 变径套
- 顶尖
- 三爪卡盘
- 变换齿轮
- 机床工具箱 (含一套工具)
- Reduction sleeves
- Centers
- Three jaw chuck
- Changing gears
- Tool box and tools 1 set

特殊附件 /Special accessories

- 四爪卡盘
- 花盘
- 中心架
- 跟刀架
- 活顶尖
- 床座
- 工作灯
- 脚刹
- 冷却
- Four jaw chuck
- Face plate
- Steady rest
- Follow rest
- Live center
- Machine base
- Work light
- Foot brake
- Coolant

技术参数	Specification	Models	
		CM6241×1000/1500	CM6241V×1000/1500
加工范围 Capacity			
床身上最大工件回转直径	Swing over bed	410mm(16 ")	
拖板上最大工件回转直径	Swing over cross slide	255mm(10 ")	
马鞍槽内最大回转直径	Swing in gap diameter	580mm(23 ")	
花盘前马鞍有效长度	Length of gap	190mm(7-1/2 ")	
两顶尖中心距	Admits between	1000mm(40 ")/1500mm(60")	
主轴中心高	Center height	205(8")	
床身宽度	Width of bed	250(10 ")	
主轴 HEADSTOCK			
主轴端部	Spindle nose	D1-6	
主轴通孔直径	Spindle bore	52mm(2 ")	
主轴内孔锥度	Taper of spindle bore	No.6Morse	
主轴转速范围	Range of spindle speed	16 changes 45-1800r/min	30-550r/min or 550-3000r/min
进给及螺纹 FEEDS AND THREADS			
小拖板最大纵向行程	Compound rest travel	140mm(5-1/2 ")	
中拖板最大横向行程	Cross slide travel	210mm(8-1/4 ")	
大丝杆规格	Lead screw thread	4T.P.I.	
车刀刀杆最大尺寸 (宽 × 高)	Max.Section of tool (W×H)	20×20mm(13/16 ")	
纵向进给范围	Longitudinal feeds range	0.05-1.7mm/rev(0.002 " -0.067 " /rev)	
横向进给范围	Cross feeds range	0.025-0.85mm(0.001 " -0.0335 " /rev)	
公制螺纹范围	Threads metric pitches	39kinds 0.2-14mm	
英制螺纹范围	Threads imperial pitches	45kinds 2-72T.P.I	
径节制螺纹规格	Threads diametral pitches	21kinds 8-44D.P.	
模数制螺纹规格	Threads module pitches	18kinds 0.3-3.5M.P.	
尾座 TAILSTOCK			
尾座套筒直径	Quill diameter	50mm(2 ")	
尾座套筒行程	Quill travel	120mm(4-3/4 ")	
尾座套筒内孔锥度	Quill taper	No.4 Morse	
横向调整	Cross adjustment	±13mm(±1/2 ")	
电机 MOTOR			
主电机功率	Main motor power	2.2/3.3kW(3/4.5HP)3PH	
冷却泵功率	Coolant pump power	0.1kW(1/8HP),3PH	
外形尺寸及重量 DIMENSION AND WEIGHT			
外型尺寸(长×宽×高)	Overall dimension(L×W×H)	194×85×132cm/244×85×132cm	
包装箱尺寸(长×宽×高)	Packing size(L×W×H)	206×90×164cm/256×90×164cm	
净重 / 毛重	Net weight/Gross weight	1160kg/1350kg 1340kg /1565kg	

C6241/46/46E/51/56/56E(V)

卧式车床 ENGINE LATHE



特点 / Features

- ◆ 整体床座和分体床座可供选择
- ◆ Whole or segregate foot stand for optional

标准附件 / Standard accessories

- 三爪卡盘
- 变径套及顶尖
- 油枪
- 3 Jaw chuck and adapter
- Sleeve and center
- Oil gun

特殊附件 / Special accessories

- 四爪卡盘
- 花盘
- 拔盘
- 中心架
- 跟刀架
- 工作灯
- 脚刹
- 冷却
- 4 Jaw chuck and adapter
- Face plates
- Driving plate
- Steady rest
- Follow rest
- Work light
- Foot brake
- Coolant

机床规格及技术参数 / Specification

技术参数	Specification	Model					
		C6241	C6246	C6246E	C6251	C6256	C6256E
床身上最大工件回转直径	Swing over bed	410mm(16")	460mm(18")	460mm(18")	510mm(20")	560mm(22")	560mm(22")
拖板上最大工件回转直径	Swing over cross slide	220mm (8-13/16")	270mm (10-3/4")	270mm (10-3/4")	305mm (12")	355mm (14")	355mm (14")
马鞍内最大工件回转直径	Swing in gap diameter	640mm (25-1/8")	690mm (27-1/8")	690mm (27-1/8")	735mm (28-7/8")	785mm (30-7/8")	785mm (30-7/8")
顶尖距	Distance between centers	1000mm(40") 1500mm(60") 2000mm(80")			1000mm(40") 1500mm(60") 2000mm(80") 3000mm(120")		
花盘前马鞍有效长度	Valid length of gap	165mm(6-1/2")			170mm(6-11/16")		
床身宽度	Width of bed	300mm(11-13/16")			350mm(13-13/16")		
主轴端部	Spindle nose	D1-6		D1-8	D1-8		
主轴通孔直径	Spindle bore	58mm(2-1/4")		80mm(3-1/8")	80mm(3-1/8")		105mm(4-1/8")
主轴内孔锥度	Taper of spindle bore	No.6 Morse		No.7 Morse	No.7 Morse		φ113 (1:20)
主轴转速范围	Range of spindle speed	12 changes, 25 ~ 2000r/min			12 changes, 25~2000r/min		12 changes, 25 ~ 1500r/min
小拖板行程	Compound rest travel	128mm(5")			130mm(5-1/8")		
中拖板行程	Cross slide travel	285mm(11-1/4")			316mm(12-7/16")		
刀具最大截面	Max.section of tool	25×25mm(1"×1")					
大丝杠螺距	Lead screw thread	6mm or 4T.P.I.					
纵向进给	Longitudinal feeds range	42 kinds, 0.031 ~ 1.7mm/rev (0.0011"~ 0.0633/rev)			35kinds, 0.059 ~ 1.646mm/rev (0.0022"~ 0.0612/rev)		
横向进给	Cross feeds range	42 kinds, 0.014 ~ 0.784mm/rev (0.00033"~ 0.01837/rev)			42 kinds, 0.020 ~ 0.573mm/rev (0.00048"~ 0.01354/rev)		
公制螺距范围	Threads metric pitches	41 kinds, 0.1 ~ 14mm			47 kinds, 0.2 ~ 14mm		41 kinds, 0.1 ~ 14mm
英制螺距范围	Threads imperial pitches	60 kinds, 2 ~ 112T.P.I.					
径节制螺距范围	Threads diametral pitches	50 kinds, 4 ~ 112DP					
模数制螺距范围	Threads module pitches	34 kinds, 0.1 ~ 7MP					
尾座套筒直径	Quill diameter	60mm(2-5/16")			75mm(2-15/16")		
尾座套筒行程	Quill travel	130mm(5")			180mm(7-1/16")		
尾座套筒内孔锥度	Quill taper	No.4 Morse			No.5 Morse		
主电机	Main motor power	5.5kW(7.5HP) 3PH			7.5kW(10HP) 3PH		
冷却泵	Coolant pump power	0.1kW(1/8HP) 3PH					
外形尺寸 (长×宽×高)	Overall dimension(L×W×H)	220×108×134cm 275×108×134cm 325×108×134cm	220×108×137cm 275×108×137cm 325×108×137cm	220×108×137cm 275×108×137cm 325×108×137cm	239×115×143cm 284×115×143cm 334×115×143cm 434×115×143cm	239×115×146cm 284×115×146cm 334×115×146cm 434×115×146cm	239×115×146cm 284×115×146cm 334×115×146cm 434×115×146cm
包装箱尺寸 (长×宽×高)	Packing size(L×W×H)	225×112×162cm 280×112×162cm 330×112×162cm	225×112×162cm 280×112×156cm 330×112×156cm	225×112×162cm 280×112×156cm 330×113×156cm	245×119×174cm 290×119×174cm 340×119×174cm 440×119×174cm	245×119×174cm 290×119×174cm 340×119×174cm 440×119×174cm	245×119×174cm 290×119×174cm 340×119×174cm 440×119×174cm
净重	Net weight	1580kg 1745kg 1900kg	1645kg 1810kg 1965kg	1645kg 1810kg 1965kg	2070kg 2160kg 2435kg 2805kg	2195kg 2285kg 2560kg 2930kg	2195kg 2285kg 2560kg 2930kg
毛重	Gross weight	1844kg 2049kg 2229kg	1910kg 2115kg 2295kg	1910kg 2115kg 2295kg	2460kg 2550kg 2840kg 3270kg	2600kg 2690kg 2980kg 3410kg	2600kg 2690kg 2980kg 3410kg

C6266A/CQ6280

卧式车床

ENGINE LATHE



特点 / Features

- ◆ 整体床座和分床座可供选择
- ◆ Whole or segregate foot stand for optional

标准附件 / Standard accessories

- 三爪卡盘
- 变径套及顶尖
- 油枪
- 3 Jaw chuck and adapter
- Sleeve and center
- Oil gun

特殊附件 / Special accessories

- 四爪卡盘
- 花盘
- 拔盘
- 中心架
- 跟刀架
- 工作灯
- 脚刹
- 冷却
- 4 Jaw chuck and adapter
- Face plates
- Driving plate
- Steady rest
- Follow rest
- Work light
- Foot brake
- Coolant

机床规格及技术参数 / Specification

技术参数	Specification	Model	
		C6266A	CQ6280
床身上最大工件回转直径	Swing over bed	660mm (26")	800mm (31-1/2")
拖板上最大工件回转直径	Swing over cross slide	440mm (17-5/16")	570mm (22-7/16")
马鞍内最大工件回转直径	Swing in gap diameter	900mm (35-7/16")	1035mm (40-3/4")
顶尖距	Distance between centers	1500mm(60") 2000mm(80") 3000mm(120")	1500mm(60") 2000mm(80") 3000mm(120")
花盘前马鞍有效长度	Valid length of gap	250mm(10")	
床身宽度	Width of bed	400mm(15-13/16")	
主轴端部	Spindle nose	D1-8	
主轴通孔直径	Spindle bore	105mm(4-1/8")	
主轴内孔锥度	Taper of spindle bore	φ113 (1:20)	
主轴转速范围	Range of spindle speed	25 ~ 1600 r/min	
小拖板行程	Compound rest travel	230mm(9-1/8")	
中拖板行程	Cross slide travel	368mm(14-1/2")	420mm(16-17/32")
刀具最大截面	Max.section of tool	25×25mm(1"×1")	
大丝杠螺距	Lead screw thread	12mm or 2T.P.I	
纵向进给	Longitudinal feeds range	0.044 ~ 1.48mm/rev (0.00165"~ 0.0550"/rev)	
横向进给	Cross feeds range	0.022 ~ 0.74mm/rev (0.00083"~ 0.02774"/rev)	
公制螺距范围	Threads metric pitches	54 kinds, 0.45 ~ 120mm	
英制螺距范围	Threads imperial pitches	54 kinds, 7/16 ~ 80T.P.I.	
径节制螺距范围	Threads diametral pitches	42 kinds, 7/8 ~ 160DP	
模数制螺距范围	Threads module pitches	46 kinds, 0.25 ~ 60MP	
尾座套筒直径	Quill diameter	90mm(3-1/2")	
尾座套筒行程	Quill travel	235mm(9-1/4")	
尾座套筒内孔锥度	Quill taper	No.5 Morse	
主电机	Main motor power	7.5kW(10HP) 3PH	
冷却泵	Coolant pump power	0.1kW(1/8HP) 3PH	
外形尺寸 (长×宽×高)	Overall dimension(L×W×H)	321×123×160cm 371×123×160cm 471×123×160cm	321×123×167cm 371×123×167cm 471×123×167cm
包装箱尺寸 (长×宽×高)	Packing size(L×W×H)	324×114×184cm 374×114×184cm 474×114×184cm	324×114×191cm 374×114×191cm 474×114×191cm
净重	Net weight	3065kg 3345kg 3710kg	3175kg 3455kg 3820kg
毛重	Gross weight	3535kg 3835kg 4310kg	3695kg 4005kg 4495kg

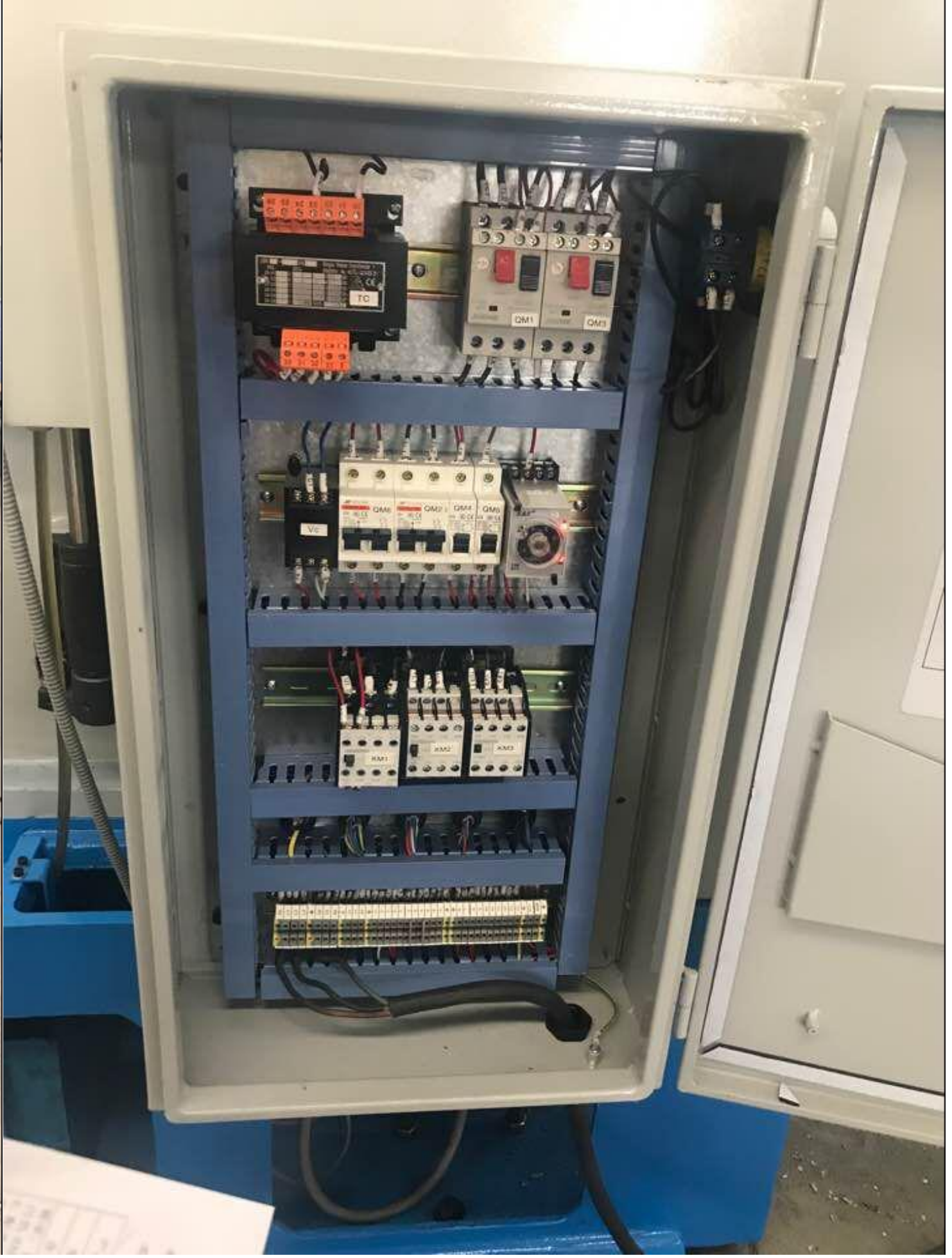
Real photos













C6251X1000

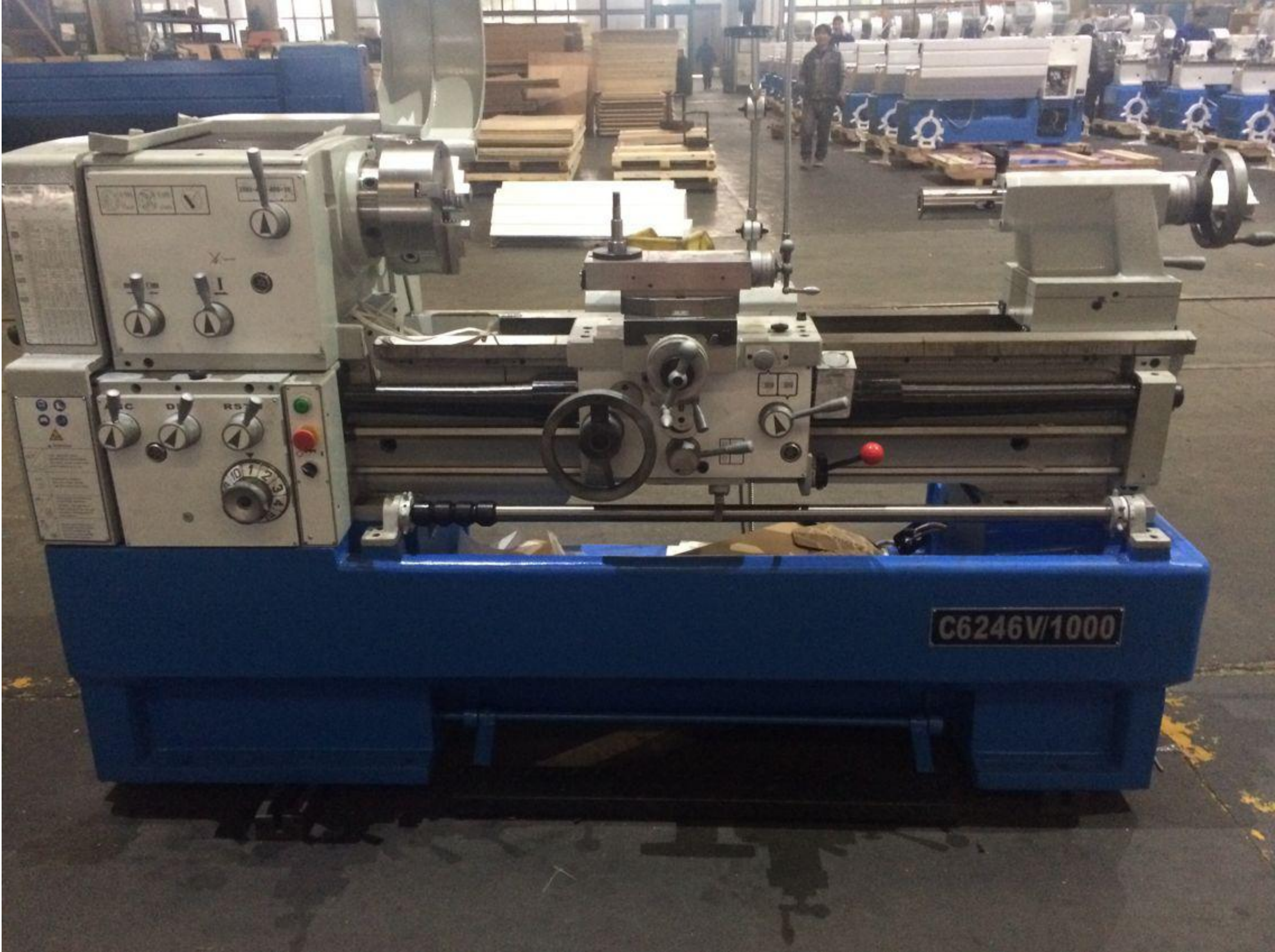






C6241x2000









C6246X1000

№13
578



TONMAC
C6261X1000

20" X 60"



CM6241x1500

SHIMADZU LATHES



165 330
70 140
45 90
108 215

C6236X1000

SERIAL NO. _____

1 2 3 4 5 6 7 8 9 10 11 12
A B C D E F G H I J K L M N O P Q R S T U V W X Y Z
1 2 3 4 5 6 7 8 9 10 11 12
A B C D E F G H I J K L M N O P Q R S T U V W X Y Z

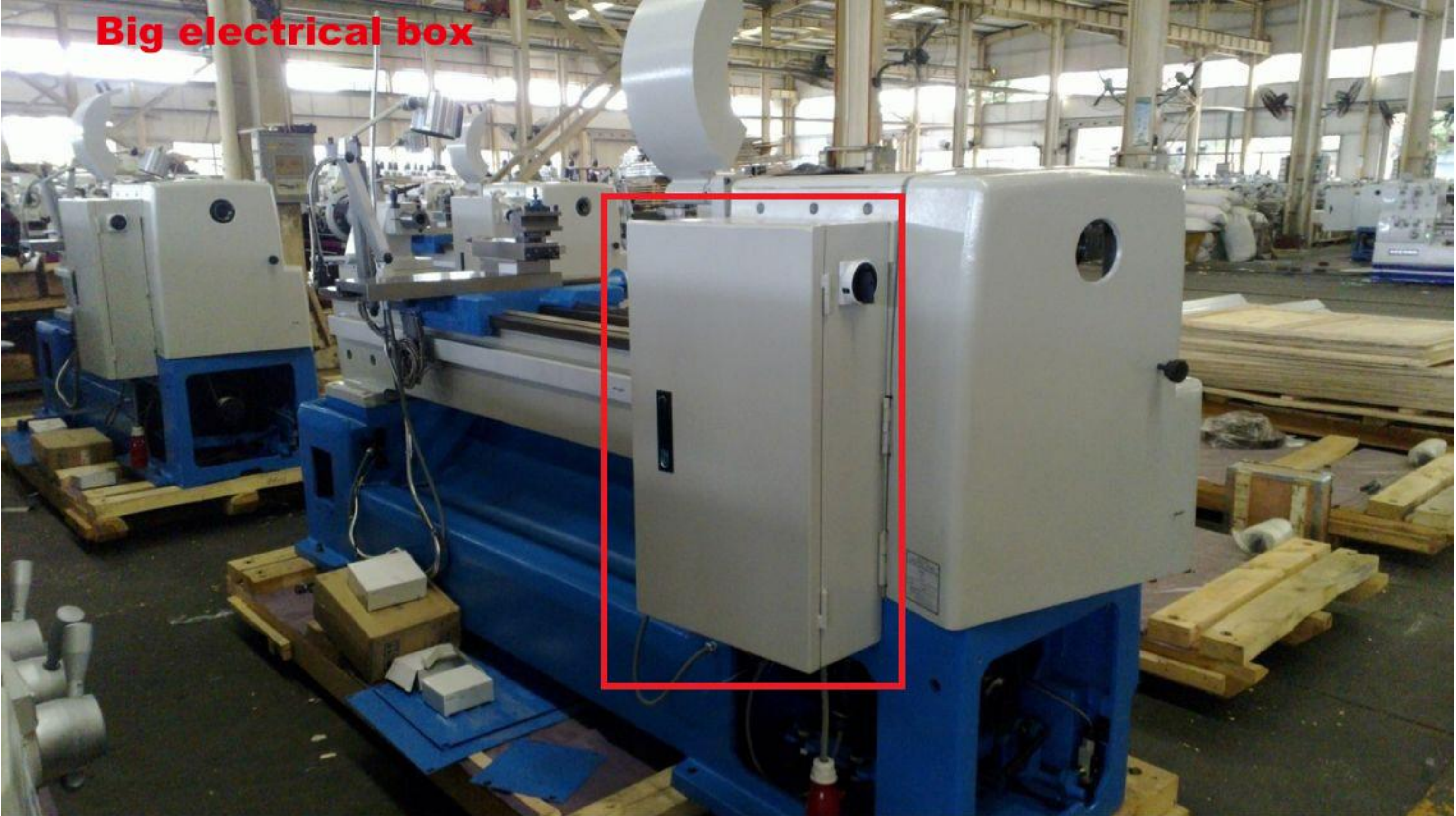


OPTIONAL PHOTOS

American type quick change tool post



Big electrical box



European type quick change tool post



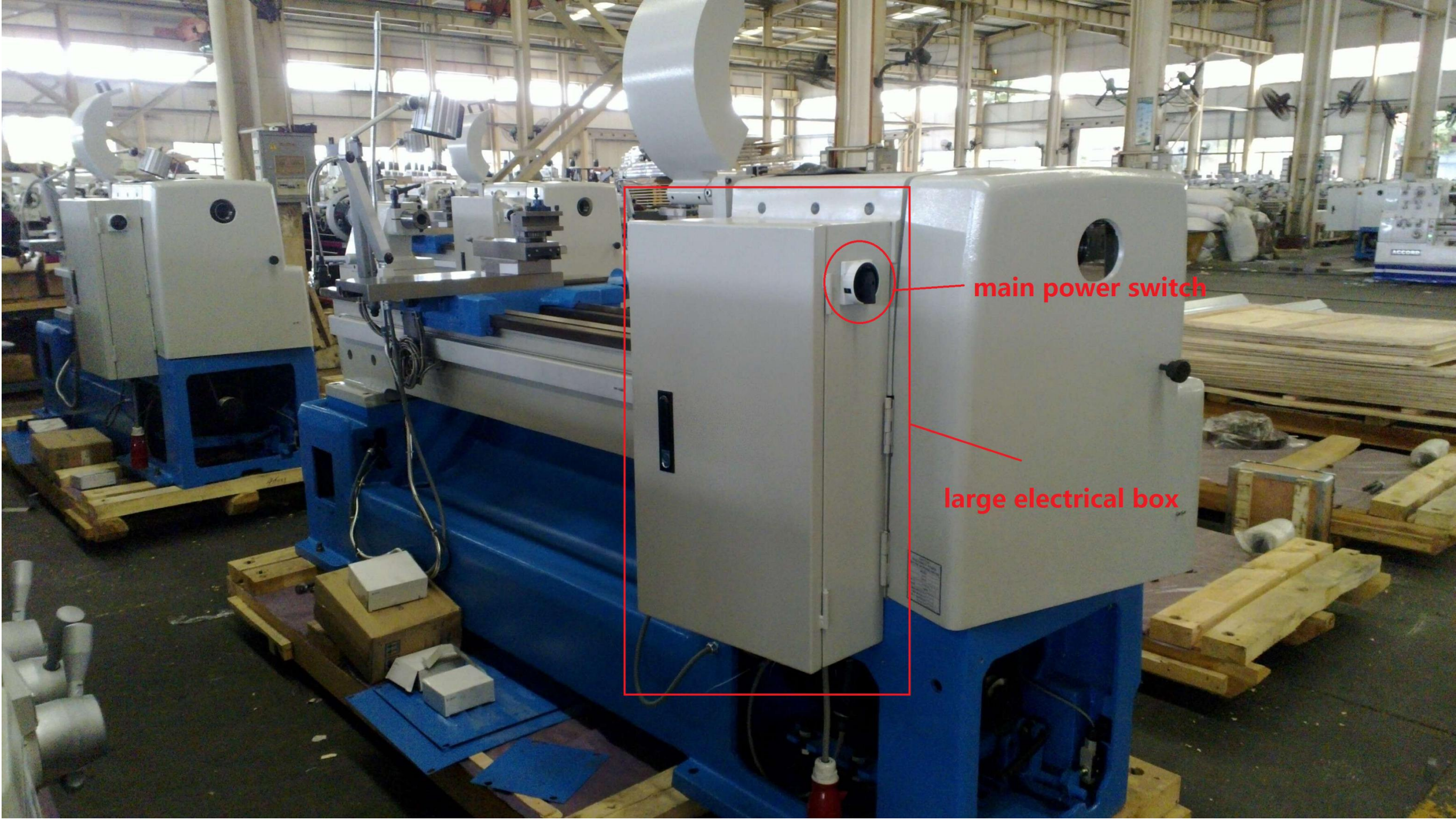
European type quick change tool post



CAUTION:
Please release
this bolt before
operation

INDICATOR TABLE

117	2.75	5.5
117	3.25	6.5
117	3.75	7.5
117	4.25	8.5
117	4.75	9.5
117	5.25	10.5
117	5.75	11.5
117	6.25	12.5
117	6.75	13.5
117	7.25	14.5
117	7.75	15.5
117	8.25	16.5
117	8.75	17.5
117	9.25	18.5
117	9.75	19.5
117	10.25	20.5
117	10.75	21.5
117	11.25	22.5
117	11.75	23.5
117	12.25	24.5
117	12.75	25.5
117	13.25	26.5
117	13.75	27.5
117	14.25	28.5
117	14.75	29.5
117	15.25	30.5
117	15.75	31.5
117	16.25	32.5
117	16.75	33.5
117	17.25	34.5
117	17.75	35.5
117	18.25	36.5
117	18.75	37.5
117	19.25	38.5
117	19.75	39.5
117	20.25	40.5
117	20.75	41.5
117	21.25	42.5
117	21.75	43.5
117	22.25	44.5
117	22.75	45.5
117	23.25	46.5
117	23.75	47.5
117	24.25	48.5
117	24.75	49.5
117	25.25	50.5
117	25.75	51.5
117	26.25	52.5
117	26.75	53.5
117	27.25	54.5
117	27.75	55.5
117	28.25	56.5
117	28.75	57.5
117	29.25	58.5
117	29.75	59.5
117	30.25	60.5
117	30.75	61.5
117	31.25	62.5
117	31.75	63.5
117	32.25	64.5
117	32.75	65.5
117	33.25	66.5
117	33.75	67.5
117	34.25	68.5
117	34.75	69.5
117	35.25	70.5
117	35.75	71.5
117	36.25	72.5
117	36.75	73.5
117	37.25	74.5
117	37.75	75.5
117	38.25	76.5
117	38.75	77.5
117	39.25	78.5
117	39.75	79.5
117	40.25	80.5
117	40.75	81.5
117	41.25	82.5
117	41.75	83.5
117	42.25	84.5
117	42.75	85.5
117	43.25	86.5
117	43.75	87.5
117	44.25	88.5
117	44.75	89.5
117	45.25	90.5
117	45.75	91.5
117	46.25	92.5
117	46.75	93.5
117	47.25	94.5
117	47.75	95.5
117	48.25	96.5
117	48.75	97.5
117	49.25	98.5
117	49.75	99.5
117	50.25	100.5



main power switch

large electrical box



Lead screw cover



SINO digital readout



Follow rest